



dZ4LW3 Digital Wireless Cycle Computer Owner's Manual



INTRODUCTION

Congratulations on your purchase of the digital dZ4LW-3 wireless cycle computer by FILZER. Packed with all the features that a professional rider needs to keep track of during a workout, this computer is a perfect training tool for any cyclist.

HOW TO MEASURE WHEEL SIZE

WHEEL SIZE (WS): Before you program your computer you need to determine your Wheel Size (WS). WS is the circumference of the front wheel in mm. This value is entered into the computer in order to calculate speed and distance.

While charts provide a quick and easy way to get WS, there are no standard wheel sizes in the cycling world - i.e. the circumference (or Wheel Size = WS) of a 700x23 tire will differ from one brand of tire to another - so for accurate speed and distance values on your computer you need to measure your wheel circumference.

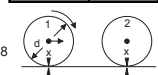
To obtain WS:

Method 1: Fast (and not so accurate) method - use chart provided.

Method 2: Most accurate method:

- See Figure 8.
- Inflate your tires to their proper pressure.
- Put a mark on your rear wheel on the outside circumference.
- Put a mark on the floor.
- Put the mark on the wheel on the mark on the floor.
- Rotate the wheel one full revolution until the mark on the wheel is on the floor again. Mark this location.
- Measure the distance between the marks on the floor in mm. This is the wheel size (WS) (i.e. your wheel circumference in mm).
- Write this number down. The value should be between 1800 and 2200 mm. The unit can accommodate WS values between 100 and 5999 mm.

Wheel Diameter d	WS
26 x 1.0	1913
26 x 1.25	1953
26 x 1.4	2005
26 x 1.5	2010
26 x 1.75	2025
26 x 1.95	2050
26 x 2.0	2055
26 x 2.1	2068
26 x 2.3	2170
700 x 18	2070
700 x 20	2086
700 x 23	2096
700 x 25	2108
700 x 28	2136
700 x 30	2170
27 x 1"	2145
27 x 1.124"	2165
27 x 1.124"	2161

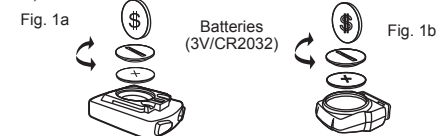


FUNCTIONS

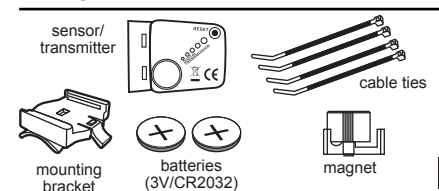
Speedometer (0-99.9 Km/hr or M/hr)
 Tripmeter (DST) (Up to 999.99 Km or M)
 Odometer (ODO) (Up to 9999.9 Km or M)
 Auto trip timer (TM) (99:59:59)
 Maximum Speed (MXS) (up to 99.9 Km/Hr or M/hr)
 Digital Clock, 12/24 hour Selectable
 Average Speed (AVS) (0-99.9 Km/hr or M/hr)
 Speed Comparator (+ or -)
 Speed Tendency (▲)
 Odometer Program Function

BATTERY INSTALLATION

Computer - (Note: Batteries are pre-installed) Remove the battery cover from the bottom of the computer using a small coin. Install the 3V battery with positive (+) pole facing the cover (Figure 1a). If the LCD shows irregular figures, take out the battery and install again. This will clear and restart the computer's microprocessor. Similar for sensor battery (Figure 1b).



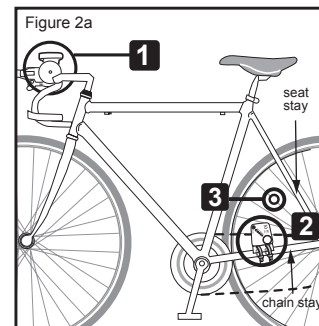
PARTS



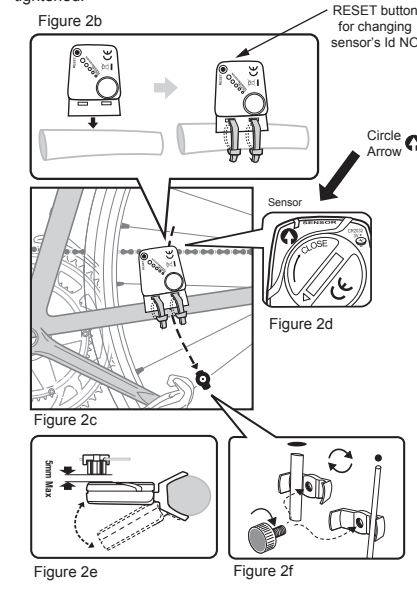
INSTALLATION

Area 1 - Mounting bracket (handlebar)
 Area 2 - Speed sensor (left chain stay or seat stay)
 Area 3 - Speed Magnet (wheel spoke)

- Install the mounting bracket as per page 5.
- See Figure 2a for position of parts on bicycle.
- Without using tie wraps - position the sensor on the left chain stay (or seat stay) and the magnet on a wheel spoke. Position the sensor and magnet in such a way so that the magnet passes over the circle arrow on the sensor as shown in Figures 2c, 2d and 2e. Note the sensor battery cover faces inwards.
- Once you have determined the approximate position of the sensor and magnet - loosely put the cable ties on the sensor and attach the magnet to the correct spoke. See Figures 2e and 2f on how to attach the spoke magnet. The magnet should be maximum 5mm from the sensor.

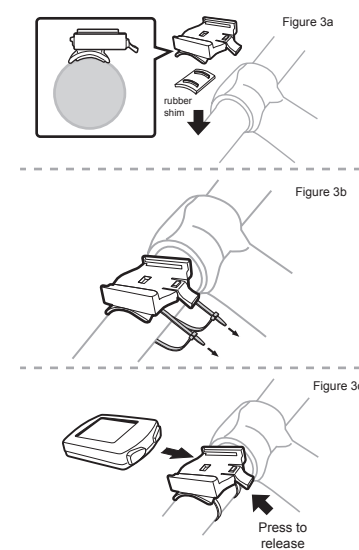


- Test out the positioning of the sensor and magnet by rotating the rear wheel to see if the computer registers a speed value. If no value is registered reposition the sensor and magnet again. Make sure the magnet passes over circle arrow on the speed sensor as shown in Figure 2d. Once you have positioned the magnet and sensor properly, tighten up the sensor cable ties and ensure the magnet is securely tightened.



MOUNTING BRACKET INSTALLATION

Attach the mounting bracket to the left side of the handlebar with the cable ties (Figure 3a and 3b). Make sure the mounting bracket is clamped tightly and will not slip on the handlebar. Slide the computer onto the mounting bracket until it snaps firmly into position. Press the release button to remove the computer (Figure 3c).



INITIAL SETUP

SETUP/RESET:

In INITIAL SETUP mode you can set WHEEL SIZE (WS), KM/MILE, 12/24 hour clock and clock time. Press and hold the LEFT and RIGHT buttons for 4 seconds to access initial setup mode. The digits on the bottom row will flash - this is the WHEEL SIZE (WS) setup (note if you have already programmed wheel size value - the last WS value you programmed will be displayed).

WHEEL SIZE (WS): Press the RIGHT button to adjust the value of the first digit of WS. Once you have entered the correct value press the LEFT button to advance to the next digit. Repeat for all four digits. Press the LEFT button to confirm and advance to KM/MILE setup.

KM/MILE SELECTION (12/24): Km/Miles units for distance and speed will flash. Press the RIGHT button to toggle between kilometre (KM) and miles (M). Press the LEFT button to confirm and advance to 12/24 CLOCK setup.

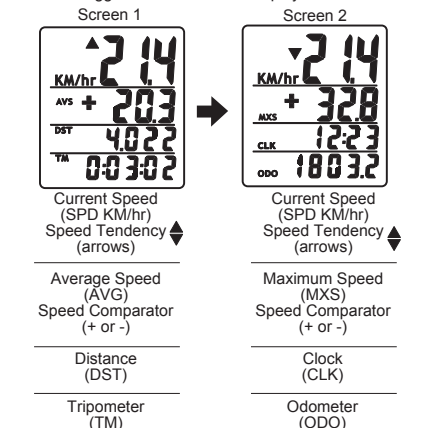
CLOCK (12H/24H): A 12 or 24-hour digital clock is displayed on the bottom row of the screen. Press the RIGHT key to toggle between 12 and 24 hour format. Press the LEFT button to confirm and advance to clock setup.

CLOCK: Press the RIGHT button to advance the hours (hold RIGHT button for fast advance). Press the LEFT button to confirm hours. Press the RIGHT button to advance minutes (hold RIGHT button for fast advance). Press LEFT button to confirm minutes and exit setup.

ADJUSTING CLK, ODO and WHEEL SIZE (WS) VALUES AFTER SETUP: CLK, ODO and WS can be changed after setup. Go to CLK screen. Press and hold LEFT button for 5 seconds. CLK hours will flash. Press the RIGHT button to advance the hours. Press the LEFT button to confirm hours. Press the RIGHT button to advance minutes. Press LEFT button to confirm minutes and enter ODO setup. To adjust ODO value, press the RIGHT button and then press the LEFT button to confirm and select the value. Repeat this sequence to reach the desired odometer value and enter WS setup. To adjust WS value, press the RIGHT button and then press the LEFT button to confirm and select the value. Repeat this sequence to reach the desired WS value and exit setup.

COMPUTER DISPLAY AND FUNCTIONS

DISPLAY: There are two main screens. Press the RIGHT button to toggle between the two display screens.



Digital ID Number: Each sensor has 5 digital id codes (Speed 0 to 4). If you are riding beside another rider with the same computer and you are getting interference, press the right button on each computer for 2 seconds to obtain the digital ID code (id NO) for the sensors. If the id NO is the same for each bicycle - stop riding and separate the bikes by 10 feet (or more). On ONE of the bikes press the sensor's RESET button once. This will change the sensor's digital id (id NO) to a random value. To sync the sensor with computer, start riding (at least 10 feet from other bikes) and within 30 seconds the sensor and computer will be synced and you will get a speed value. To verify the new id NO press the right button for 2 seconds. Note - you can only see new id NO once you sync the sensor/computer.

SPEEDOMETER (SPD): Instantaneous Speed is displayed on the first row. The range of measurement is from 0 to 99KM/hr (0 to 99M/hr) and accuracy is +/-0.5KM/hr (M/hr).

SPEED TENDENCY (▲): An "up arrow" or "down arrow" icon appears on the first row to the left of the current speed. An up arrow indicates you are accelerating. A down arrow indicates you are decelerating.

AVERAGE SPEED (AVS): AVS is displayed on the second row. AVS is calculated by dividing TM by DST. To reset AVS, press and hold the LEFT button for 2 seconds. NOTE: TM, DST and MXS will also be reset to zero.

MAXIMUM SPEED (MXS): Maximum Speed (MXS) is displayed on the second row. Maximum speed is stored in memory and updates only when a higher speed is reached. To reset MXS to zero, press and hold the LEFT button for 2 seconds.

SPEED COMPARATOR: A "+" or "-" sign appears on the second line, to the right of the SPD icon. A "+" indicates you are traveling faster than your average speed (AVS). A "-" indicates you are riding slower than your average speed.

TRIPOMETER (DST): Trip distance (DST) is displayed on the third row. DST is accumulated automatically with speedometer input. To reset DST to zero, press and hold the LEFT button for 2 seconds. NOTE: TM, AVS and MXS will also be reset to zero.

CLOCK (CLK): A 12/24 hour clock is displayed on the third row. To adjust CLK, ODO and WS see bottom section on page 7.

TRIP TIMER (TM): Trip Timer (TM) is displayed on the bottom row. Trip Timer is activated automatically with speedometer input (when the wheels are turning). It records only the time spent actually riding. To reset TM to zero, press and hold the LEFT button for 2 seconds. NOTE: DST, AVS and MXS will also be reset to zero.

ODOMETER (ODO): Total distance traveled (ODO) is displayed on the bottom row. To adjust CLK, ODO and WS see bottom section on page 7

RESET: See top section on page 7.

AUTO START/STOP: The computer will start automatically (within 1 minute) when your wheels start rotating. In order to conserve the battery the computer will turn off automatically after 5 minutes.

TROUBLE SHOOTING

Problem	Solution
Inaccurate maximum speed reading	Unknown atmospheric or RF interference. Reset Max Speed.
No Speedometer reading	Improper magnet/sensor alignment. Check magnet/sensor alignment. Verify sensor battery is good.
Slow display response	Temperature outside out of operating limits (32-125 °F or 0-55 °C).
No Trip Distance reading	Improper magnet/sensor alignment. Check magnet/sensor alignment. Verify sensor battery is good.
Display shows irregular figures or blank screen	Re-install computer battery and verify that the computer battery is good.



Filzer
Made in China
Visit www.filzer.com for more great products.